

Figure 4.1 GC chromatogram of methyl linolenate in RSO extracted at 40 °C, 20 MPa at constant flow rate of 3 mL/min

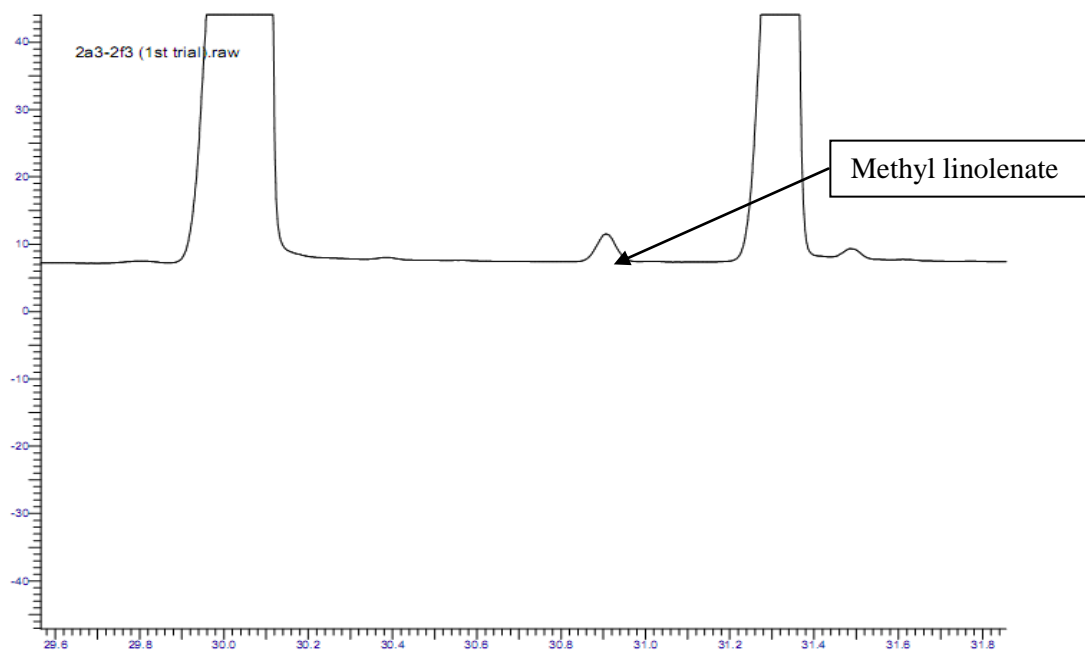


Figure 4.2 GC chromatogram of methyl linolenate in RSO extracted at 80 °C, 20 MPa at constant flow rate of 3 mL/min

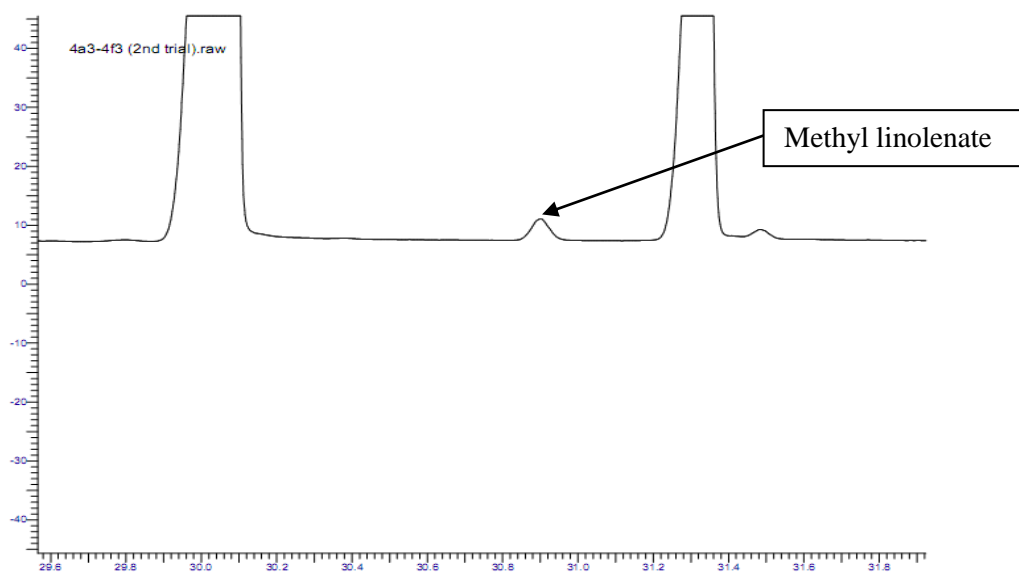


Figure 4.3 GC chromatogram of methyl linolenate in RSO extracted at 80 °C, 30 MPa at constant flow rate of 3 mL/min

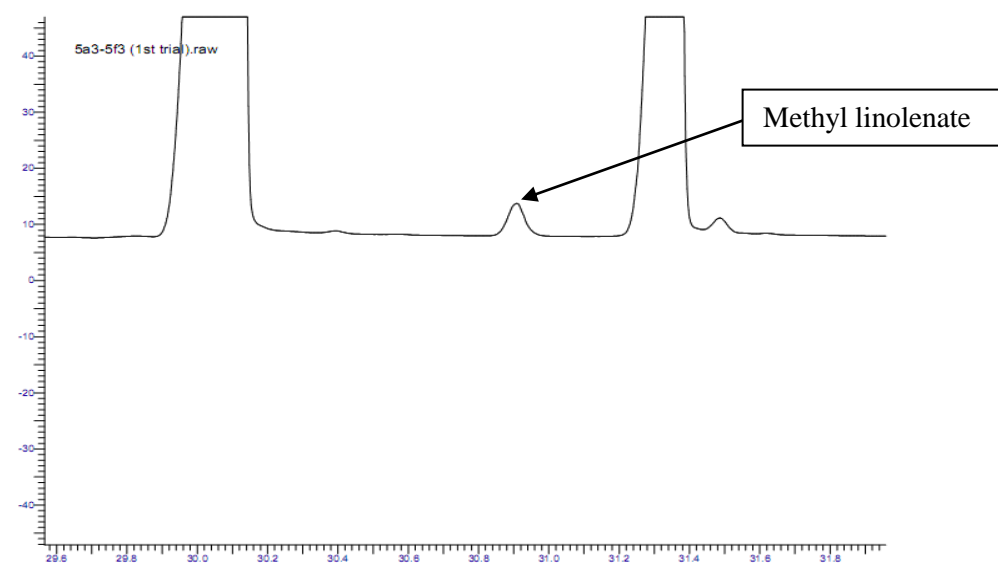


Figure 4.4 GC chromatogram of methyl linolenate in RSO extracted at 40 °C, 25 MPa at constant flow rate of 2 mL/min

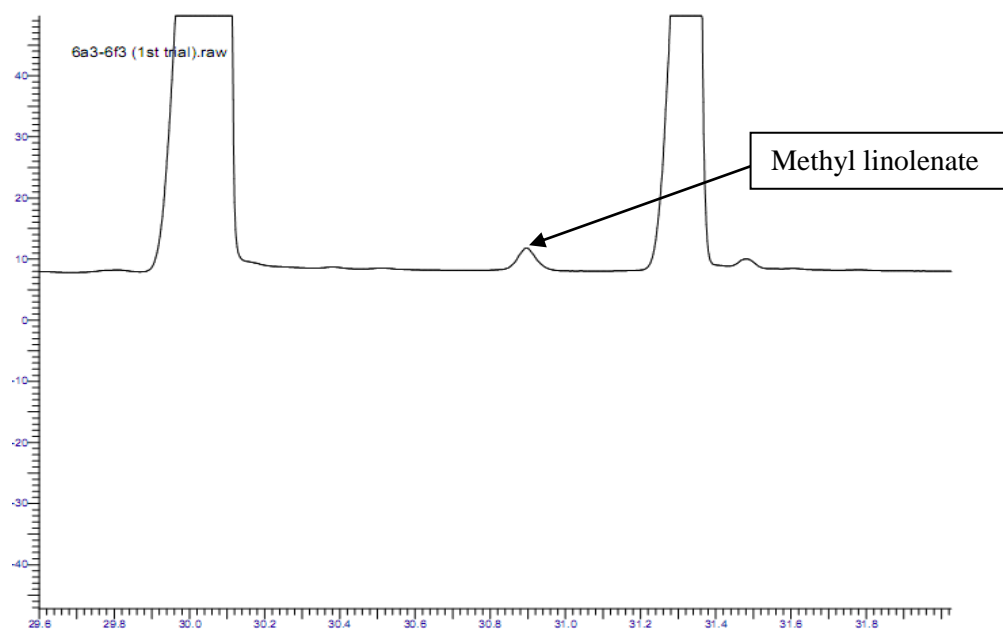


Figure 4.5 GC chromatogram of methyl linolenate in RSO extracted at 80 °C, 25 MPa at constant flow rate of 2 mL/min

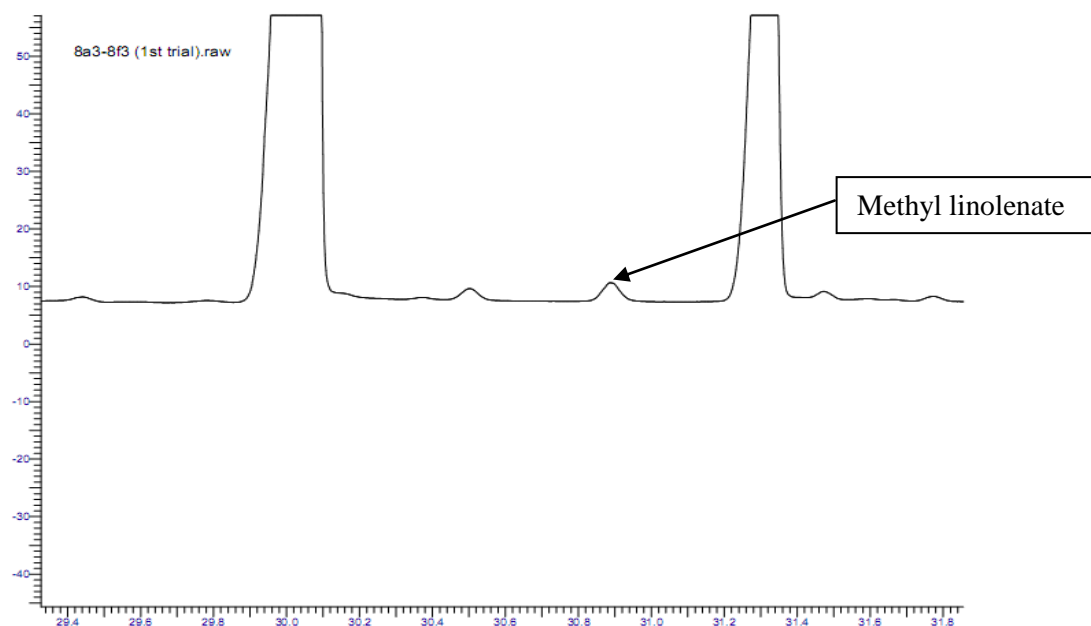


Figure 4.6 GC chromatogram of methyl linolenate in RSO extracted at 80 °C, 25 MPa at constant flow rate of 2 mL/min

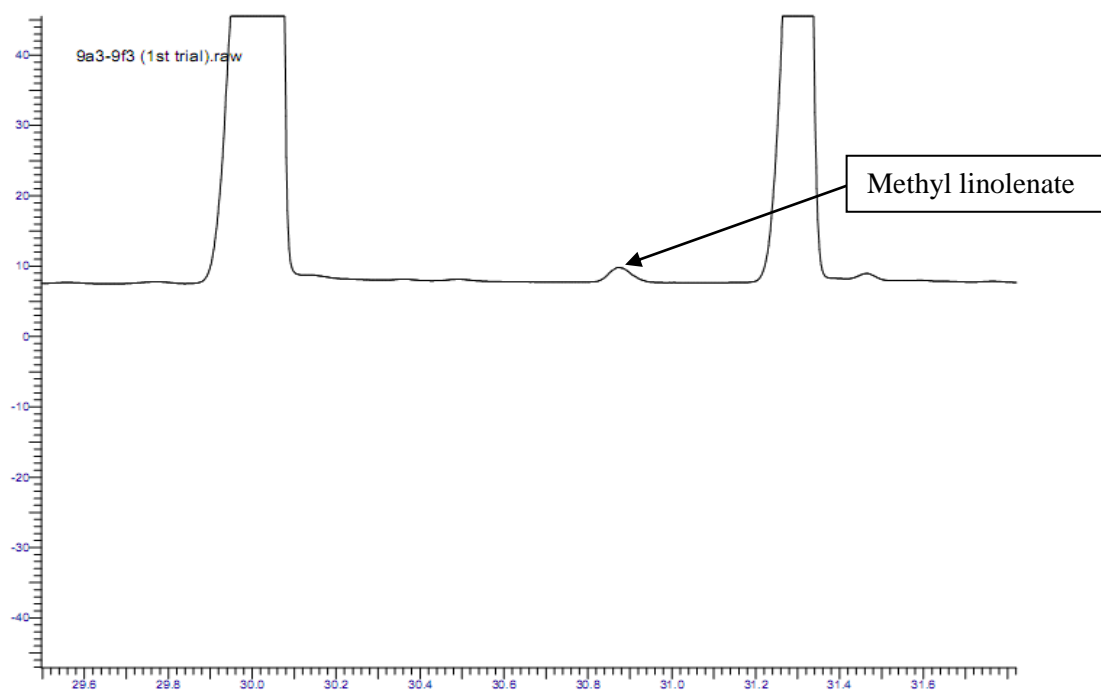


Figure 4.7 GC chromatogram of methyl linolenate in RSO extracted at 60 °C, 20 MPa at constant flow rate of 2 mL/min

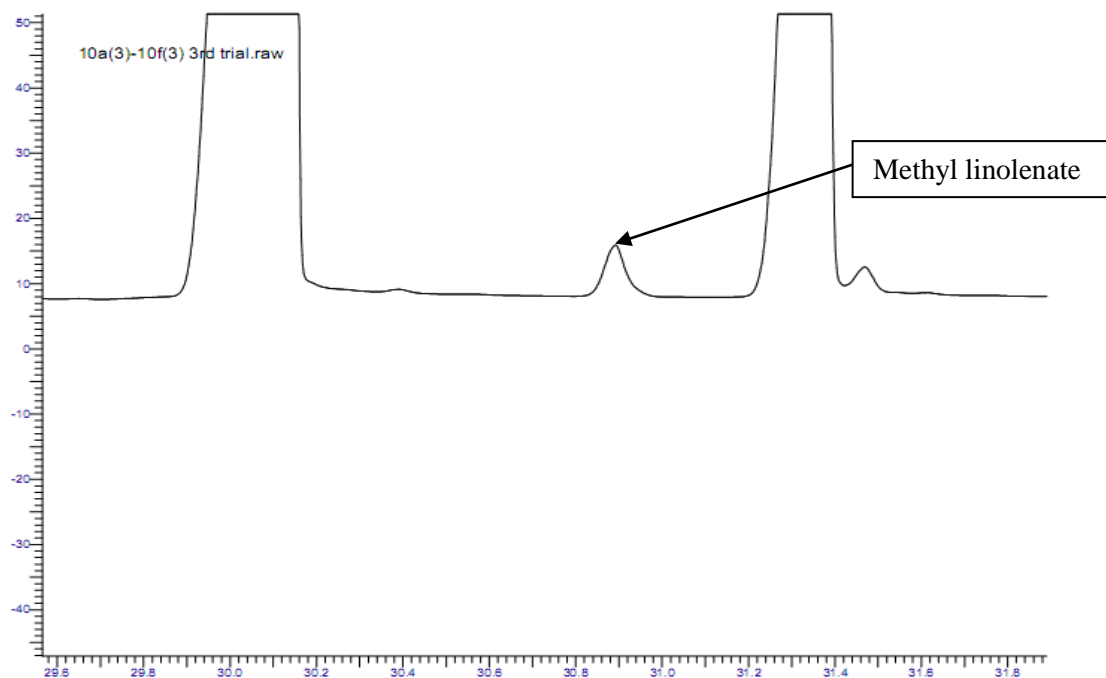


Figure 4.8 GC chromatogram of methyl linolenate in RSO extracted at 60 °C, 30 MPa at constant flow rate of 2 mL/min

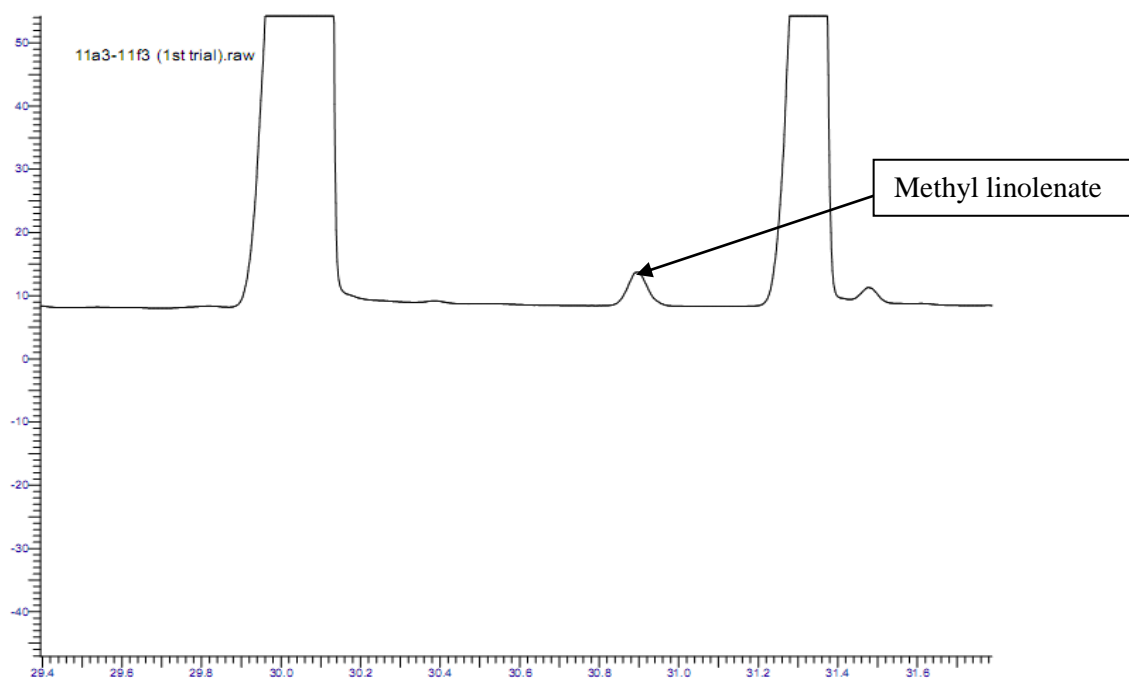


Figure 4.9 GC chromatogram of methyl linolenate in RSO extracted at 60 °C, 20 MPa at constant flow rate of 4 mL/min

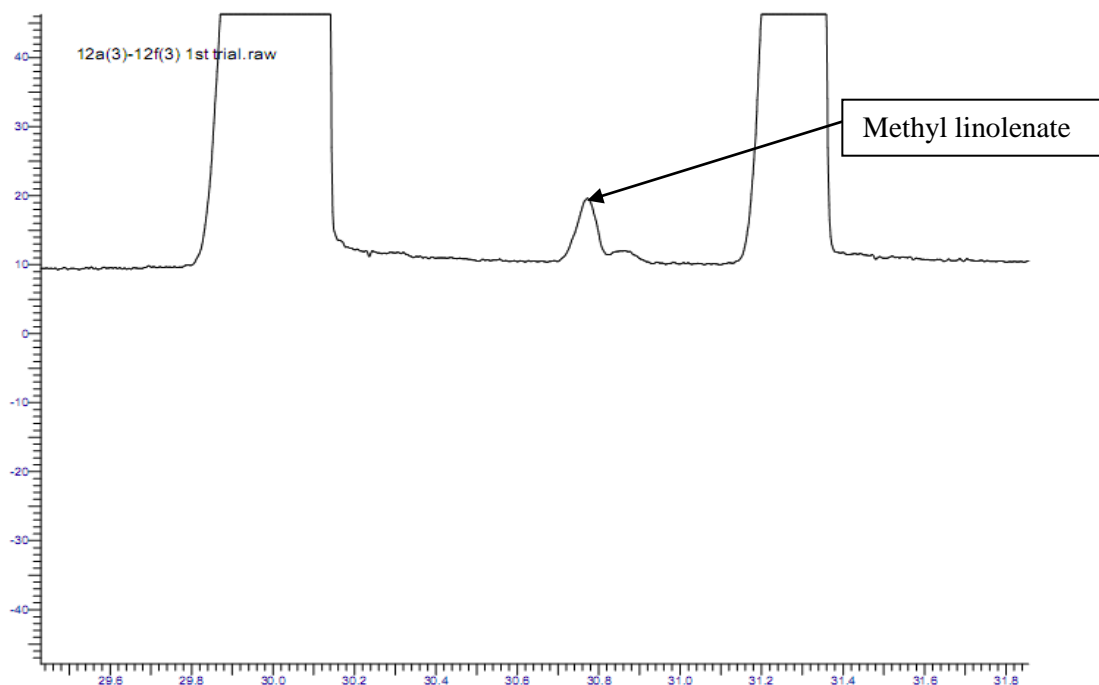


Figure 4.10 GC chromatogram of methyl linolenate in RSO extracted at 60 °C, 30 MPa at constant flow rate of 4 mL/min

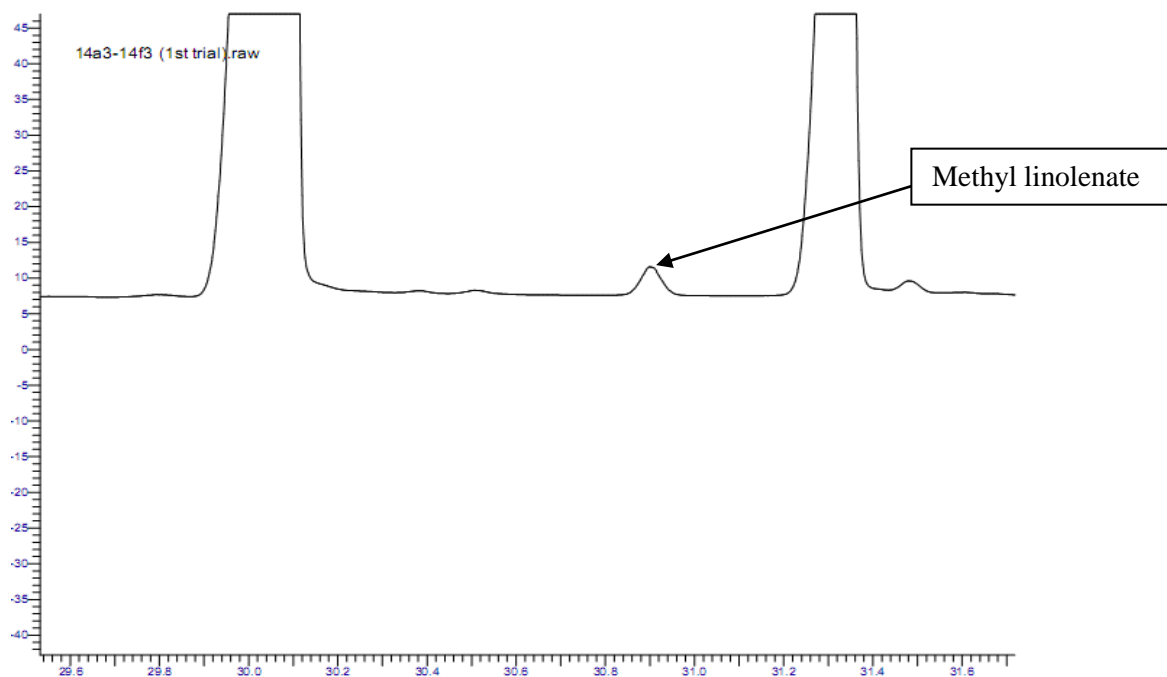


Figure 4.11 GC chromatogram of methyl linolenate in RSO extracted at 60 °C, 25 MPa at constant flow rate of 3 mL/min

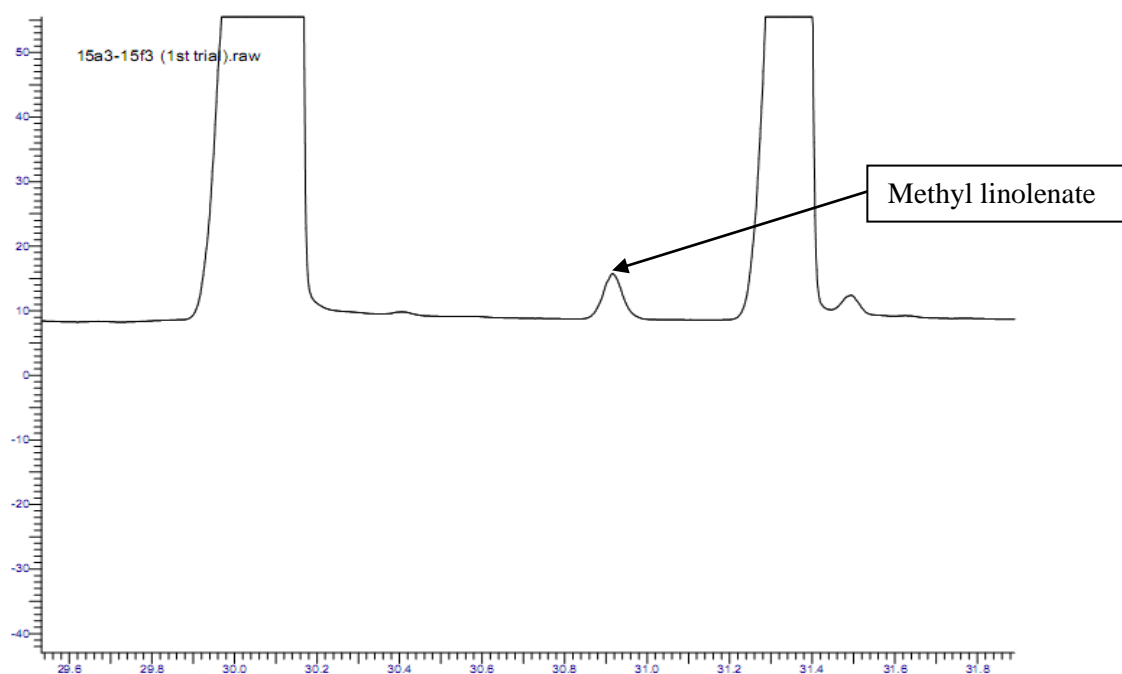


Figure 4.12 GC chromatogram of methyl linolenate in RSO extracted at 60 °C, 25 MPa at constant flow rate of 3 mL/min

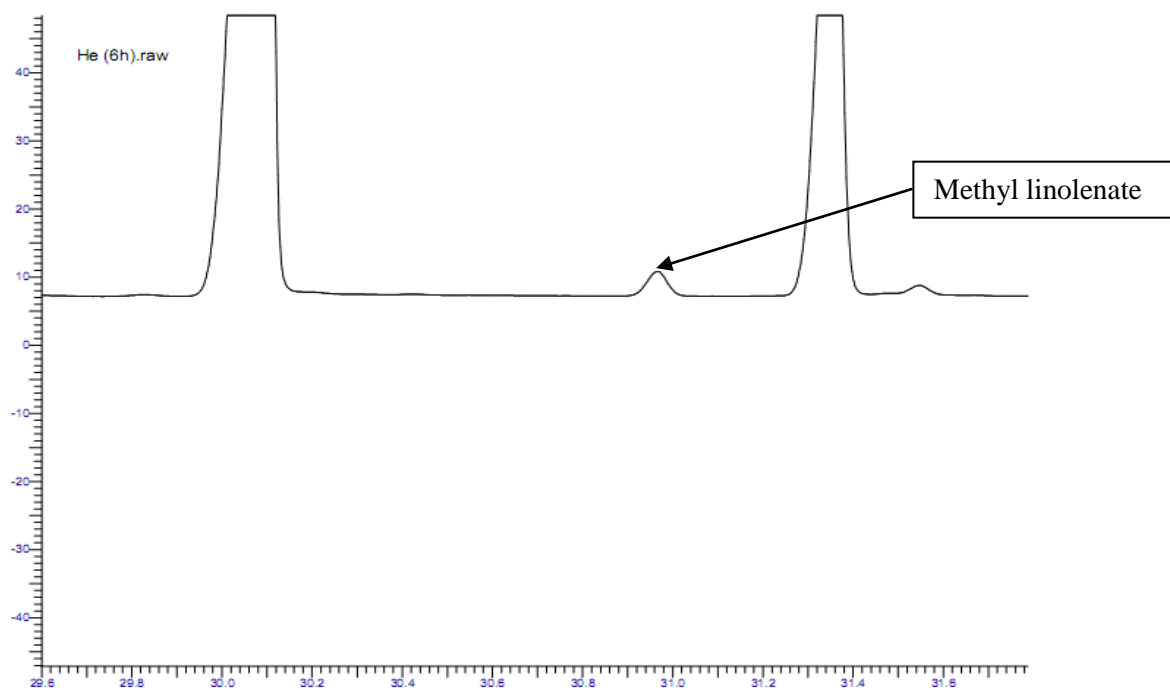


Figure 4.13 GC chromatogram of methyl linolenate in RSO extracted using Soxhlet method (n-hexane) at 70 °C with 6 hours extraction time